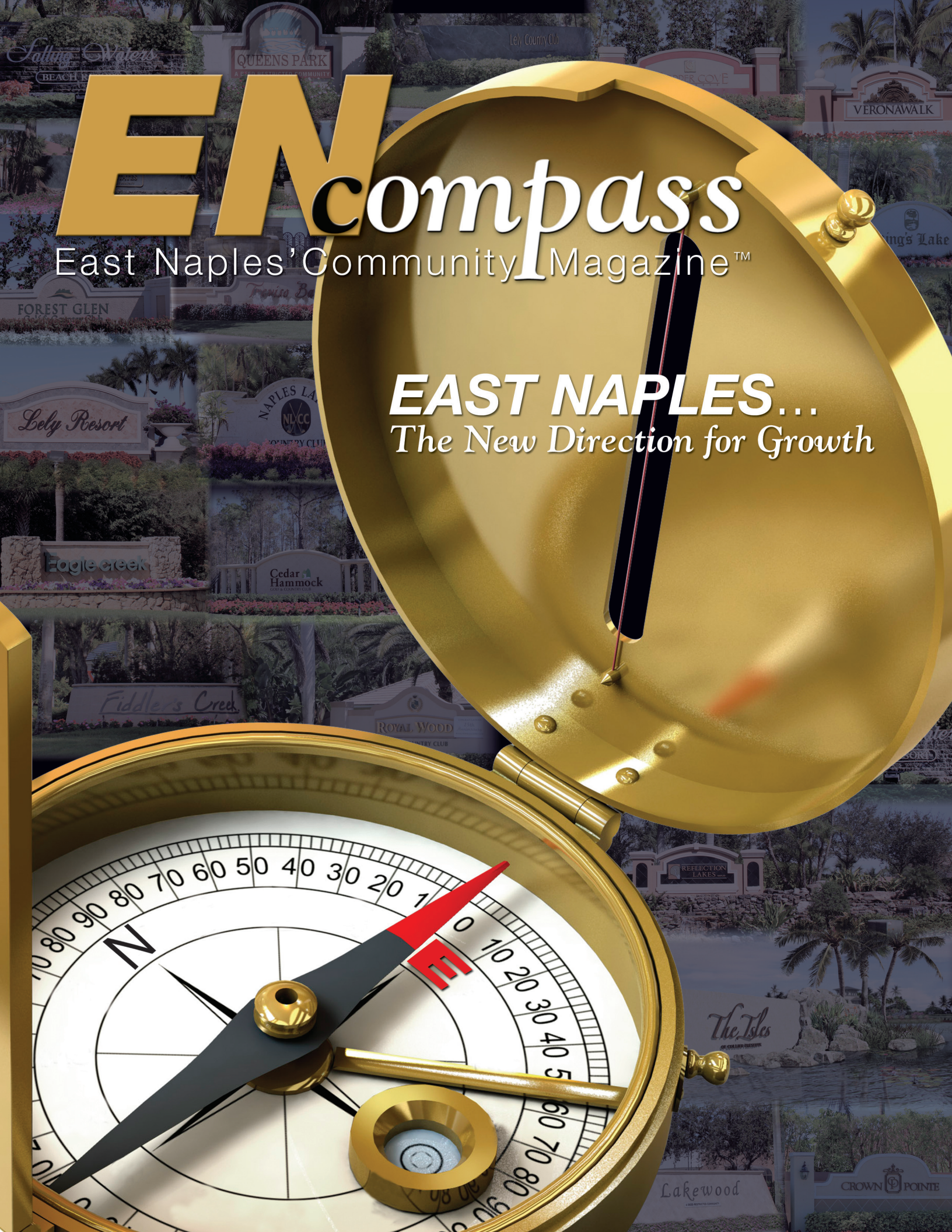


# EN *compass*

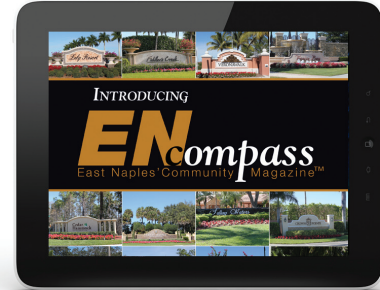
East Naples' Community Magazine™

**EAST NAPLES...**  
*The New Direction for Growth*





## IN THE MAIL AND ONLINE



# ENcompass

East Naples' Community Magazine™

DIRECT MAILED TO HOMES IN LOCAL EAST NAPLES COMMUNITIES

IN ZIP CODES 34104, 34112, 34113, 34114 INCLUDING

Antilles • Azure • Cedar Hammock • Club Estates • Crown Pointe • Eagle Creek  
Esplanade • Fiddler's Creek • Firano of Naples • Forest Glen • The Isles of Collier Preserve  
King's Lake • Lely Country Club • Lely Golf Estates • Lely Resort • Madison Park  
Manatee Cove • Naples Lakes • Naples Heritage • Naples Reserve • Queen's Park  
Reflection Lakes • Royal Wood • Seychelles • Treviso Bay • VeronaWalk  
Winding Cypress • Windstar

CURRENT ISSUES ONLINE at [www.ENcompass-Magazine.com](http://www.ENcompass-Magazine.com)

**ENcompass Online** increases your reach by cultivating our online resources.

The current issue of **ENcompass**, as well as the previous 5 issues, will be posted online as an easy to navigate flip book utilizing the latest technology enabling our magazine to be viewed on Computers, Pads and SmartPhones.



# AD DEPOT

Publishers of the Everglades City Area  
Chamber of Commerce Publication

Publishers of Custom Publications for Bay Colony, Pelican Bay,  
Park Shore and The Colony

Ad Depot, Inc. has been designing and creating logos, brochures, presentation folders, maps and all types of advertising materials for accounts in Southwest Florida for over 25 years. Our account list has included such names as The Lutgert Companies, East Naples Civic & Commerce, Stock Development, Shula's Steak House, Wellness for Women, The Beach House of Naples, Medallion Medical, Rita's Italian Ice, Royal Palm Country Club, WCI and many more.



Published the Lely Resort Resident & Guest Guide magazine from 2010 to 2013 mailed to all the residents of Lely Resort.

Because of the growth in East Naples we saw the need for a more far reaching publication. The Lely Resort Resident and Guest Guide evolved into ENcompass Magazine in November of 2013. ENcompass is mailed to all the residents in 35 communities and growing.



# ENcompass

East Naples' Community Magazine™

## CONTACT INFORMATION

**Shirley Calhoun**

239.435.9410 | [addepot@earthlink.net](mailto:addepot@earthlink.net)

[www.AdDepotInc.com](http://www.AdDepotInc.com)



# INFORMATION SHEET

---



**ENcompass** is the new community publication of East Naples, Florida. The mission of **ENcompass** is to keep residents informed about their community through a focus on events, activities, dining and shopping options, area attractions, organizations and people.

---

## PUBLICATION SCHEDULE AND CONTENTS:

**ENcompass** is published five times per year:

January/February, March/April, May/June/July, August/September/October, November/December

## HEADINGS:

### **ENjoy:**

Articles about topics of interest, lifestyle, dining and things to do.

### **ENclaves:**

Community Information and Statistics.

### **ENgage:**

Local Business News.

### **ENlighten:**

Important information and pertinent local stories.

### **ENrich:**

Column about Community Association Law

### **ENTrepreneur:**

Business Spotlight.

### **ENcounter:**

Social events. See and be seen around East Naples!

### **ENhance:**

Articles devoted to Education, Teaching and Learning.

### **ENvironment:**

Articles about outside activities and places to visit.

---

### **ENcompass:**

The East Naples' Community Magazine is mailed directly to 31,000± residences and businesses in East Naples. In addition, copies will be distributed to hotels and professional offices within the community. This gives the magazine a reach of over 65,000 readers.



EFFECTIVE JANUARY 1, 2025

# ENcompass

East Naples' Community Magazine™

## RATES PER ISSUE

### PREMIUM POSITIONS (Must Run All 5 Issues)

BACK COVER	\$2,995
INSIDE BACK COVER	\$2,795
PAGE 3	\$2,795
INSIDE FRONT COVER	\$2,595

FREQUENCY	1 ISSUE	3 ISSUES	5 ISSUES	POLITICAL/NP
Double Page Spread	\$4,195	\$3,695	\$3,295	\$2,895
Full Page	\$2,395	\$2,195	\$1,895	\$1,695
2/3 Page	\$1,995	\$1,795	\$1,395	\$1,295
1/2 Page Island	\$1,595	\$1,395	\$1,175	\$1,075
1/2 Page Horizontal	\$1,495	\$1,295	\$1,075	\$975
1/3 Square	\$1,075	\$925	\$825	\$750
1/3 Vertical	\$1,075	\$925	\$825	\$750
1/4 Page	\$895	\$695	\$595	\$550
1/6 Page	\$625	\$495	\$450	\$425
1/8 Page	\$475	\$375	\$300	\$275

Prices are Per Issue. Five Time Contracts Must Run Five Consecutive Issues.  
 Rates are subject to change. Rates are non-commissionable.  
 Guaranteed Placement add 15%. Credit Card Transactions Receive a 3.5% Surcharge.

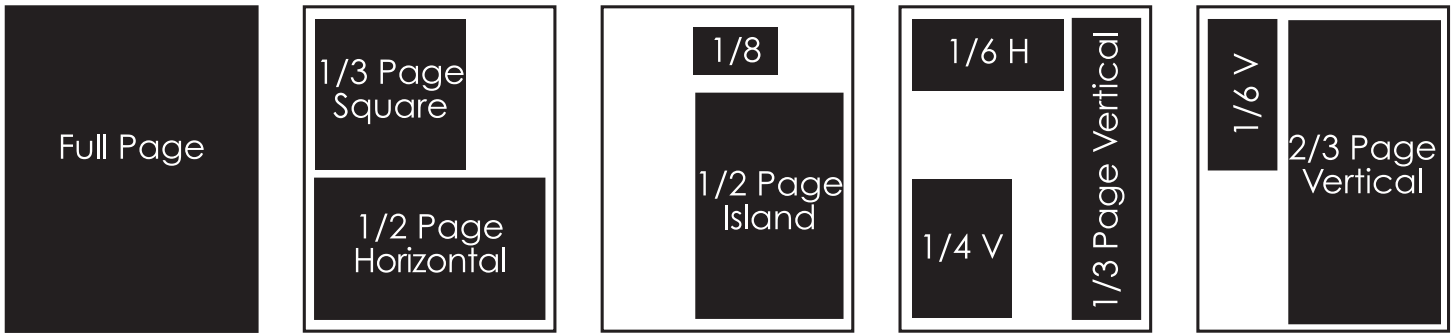
PUBLICATION DATES:	SPACE RESERVATION:	AD PRODUCTION DEADLINE:	CAMERA READY ADS:	EDITORIAL DEADLINE:
NOV/DEC 2024	SEPT. 27, 2024	OCT. 2, 2024	OCT. 4, 2024	OCT. 2, 2024
JAN/FEB 2025	NOV. 27, 2024	DEC. 2, 2024	DEC. 6, 2024	DEC. 2, 2024
MARCH/APRIL 2025	JAN. 29, 2025	FEB. 3, 2025	FEB. 7, 2025	FEB. 3, 2025
MAY/JUNE/JULY 2025	MAR. 25, 2025	MAR. 29, 2025	APRIL 5, 2025	MAR. 29, 2025
AUG/SEPT/OCT 2025	JUNE 26, 2025	JUNE 28, 2025	JULY 5, 2025	JUNE 28, 2025



# ENcompass

East Naples' Community Magazine™

## PRODUCTION SPECIFICATIONS



### DIMENSIONS

	W	x	H
Trim Size (Full Page)	8.375"		10.875"
Bleed Size (Full Page)	8.625"		11.125"
2/3 Page Vertical	4.75"		9.5"
1/2 Page Horizontal	7.125"		4.6875"
1/2 Page Island	4.75"		7.125"
1/3 Page Vertical	2.25"		9.5"
1/3 Page Square	4.75"		4.6875"
1/4 Page Vertical	3.5"		4.6875"
1/6 Page Horizontal	4.75"		2.3125"
1/6 Page Vertical	2.25"		4.6875"
1/8 Business Card	3.5"		2"

**CONSTRUCT ALL FULL PAGE ADS TO BLEED SIZE.  
SPREADS SHOULD BE BUILT AS SINGLE PAGES.**

### MECHANICAL REQUIREMENTS

**Publication Size:** Bleed = 8.625" x 11.125"  
Trim = 8.375" x 10.875" Keep all live matter a minimum of 3/8" in from trim.

### CONTACT INFORMATION

**Shirley Calhoun**  
239.435.9410 | addepot@earthlink.net  
www.AdDepotInc.com

### MATERIAL SPECIFICATIONS

**Preferred File Format:** PDF/X1a  
**PLEASE - NO PRINTERS MARKS ON PDF FILES.  
PDF FILE SHOULD BE THE EXACT SIZE OF THE AD.  
ALL FULL PAGES BUILT TO BLEED SIZE.  
SPREADS BUILT AS INDIVIDUAL PAGES.**

**Graphics:** Optimum resolution is 300DPI at 100% of final print size. All images must be converted to CMYK. Do not nest EPS files within other EPS files.

### SENDING MATERIALS

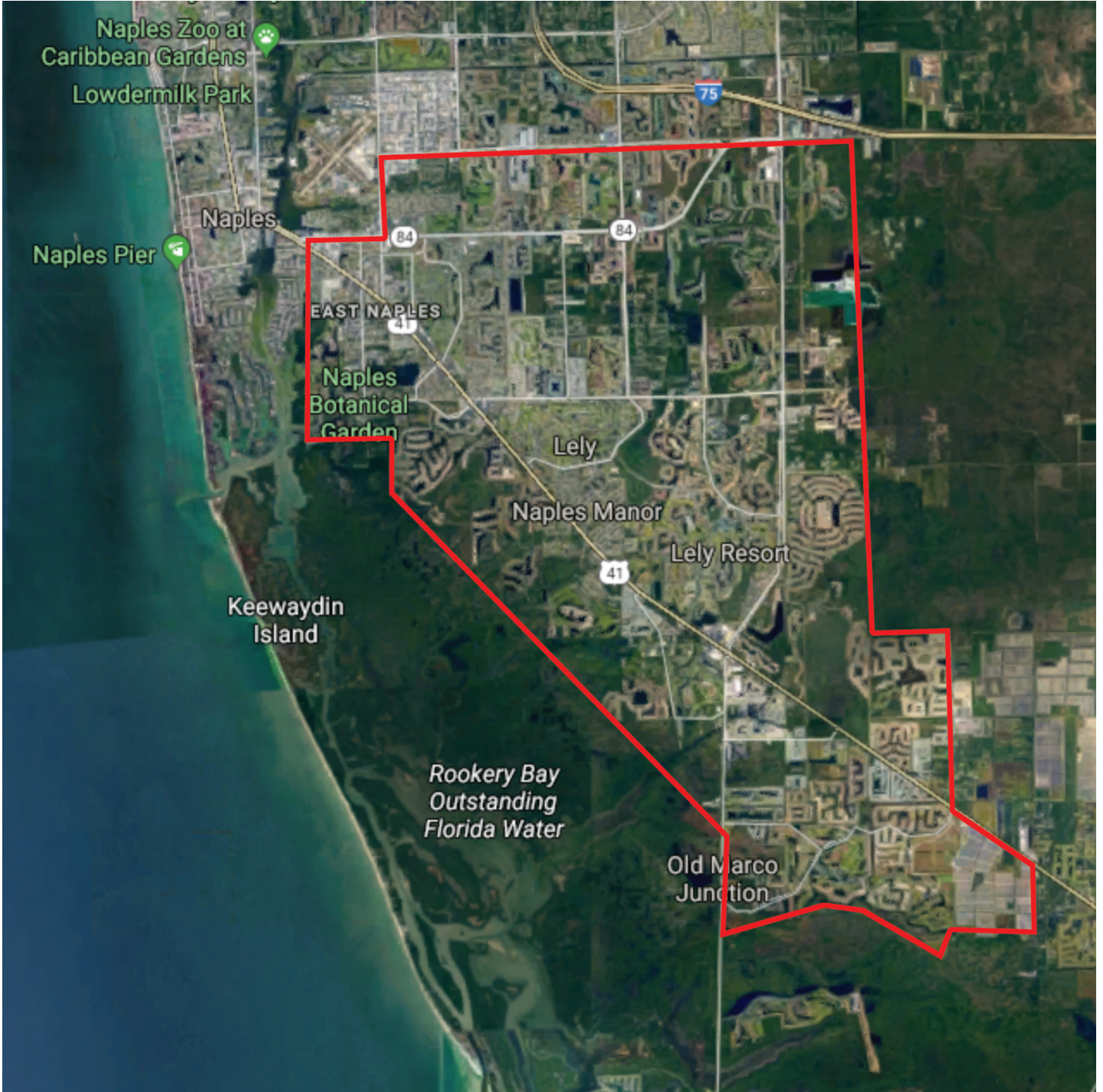
**Ship Materials to:** Ad Depot  
Production Department  
8595 Collier Boulevard, Suite 107  
Naples, FL 34114

**CD:** Please label disk with client name, art contact name, and phone number. Please include a hard copy of proof with cd.

**Email:** Files no larger than 9MB are accepted through email.



## DISTRIBUTION MAP



- Antilles • Azure • Cedar Hammock • Club Estates • Crown Pointe • Eagle Creek  
 Esplanade at Hacienda Lakes • Fiddler's Creek • Fianco of Naples • Forest Glen • The Isles of Collier Preserve  
 King's Lake • Lely Country Club • Lely Golf Estates • Lely Resort • Madison Park • Naples Lakes • Naples Heritage  
 Naples Reserve • Queen's Park • Reflection Lakes • Royal Wood • Seychelles • Treviso Bay  
 VeronaWalk • Winding Cypress • Windstar